



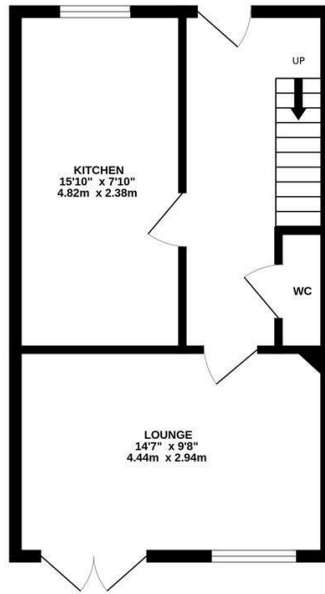
****AVAILABLE JUNE 2026** **THREE STORY TERRACED HOUSE** **OFF STREET PARKING** **UNFURNISHED**** A smart and stylish mid-terrace house, found in the ever popular Central Grange estate in Kenton, Newcastle upon Tyne. Modern and very well presented, this great property boasts spacious bedrooms, two bathrooms and a separate WC, private rear garden and an off street parking space.

Set over three floors, the property briefly comprises; entrance hallway with under-stairs WC on the ground floor; modern fitted kitchen/diner; lounge to the rear with French double doors out onto the garden; first floor landing leads to two double bedrooms; bathroom WC; separate storage cupboard; 2nd floor hosts a third double bedroom, benefiting from a walk in wardrobe and shower room en suite. Externally there is a private, south facing garden to the rear as well as an allocated off street parking space. Fully double glazed, with gas central heating and available on an unfurnished basis.

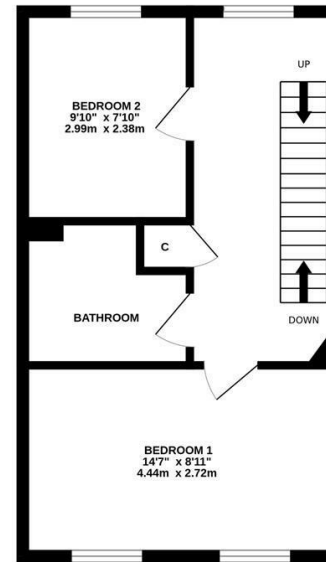
Available 24th June 2026 | £1,200pcm | Three Story Terraced House | Unfurnished | 983 Sq. ft (91.3 m2) | Central Grange Estate | Three Bedrooms | Lounge | Kitchen/Diner | Bathroom WC | Ground Floor WC | 2nd Floor En Suite Shower Room | Rear Garden | Allocated Off Street Parking Space | Great Location | Council Tax Band: C | GCH & DG | EPC Rating: C



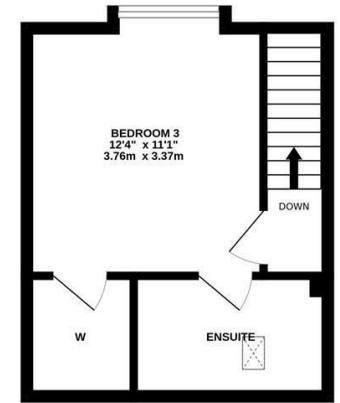
GROUND FLOOR
370 sq.ft. (34.4 sq.m.) approx.



1ST FLOOR
368 sq.ft. (34.2 sq.m.) approx.



2ND FLOOR
245 sq.ft. (22.8 sq.m.) approx.



TOTAL FLOOR AREA: 983 sq.ft. (91.3 sq.m.) approx.

Whilst every attempt has been made to ensure the accuracy of the floorplan contained here, measurements of doors, windows, rooms and any other items are approximate and no responsibility is taken for any error, omission or mis-statement. This plan is for illustrative purposes only and should be used as such by any prospective purchaser. The services, systems and appliances shown have not been tested and no guarantee as to their operability or efficiency can be given.
Made with Metropix ©2025

£1,200 PCM

IMPORTANT NOTE: These particulars and the descriptions and measurements herein do not constitute representation and whilst every effort has been made to ensure accuracy, this cannot be guaranteed.

